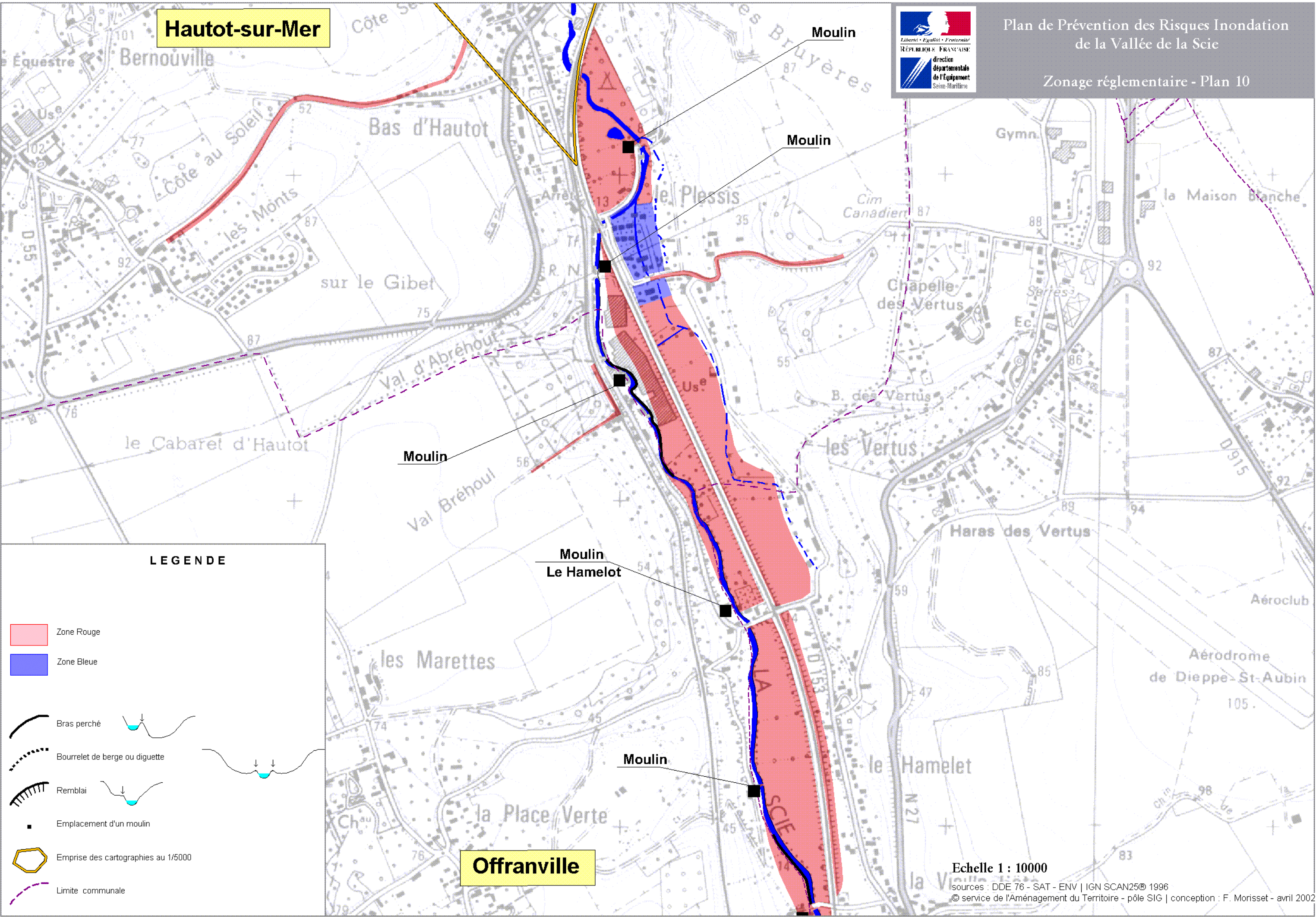


Hautot-sur-Mer











Plan de Prévention des Risques Inondation de la Vallée de la Scie

Zonage réglementaire - Plan 10



LEGENDE

-  Zone Rouge
-  Zone Bleue
-  Bras perché
-  Bourrelet de berge ou diguette
-  Remblai
-  Emplacement d'un moulin
-  Emprise des cartographies au 1/5000
-  Limite communale

Offranville

Echelle 1 : 10000

sources : DDE 76 - SAT - ENV | IGN SCAN25© 1996  
© service de l'Aménagement du Territoire - pôle SIG | conception : F. Morisset - avril 2002

K:\C-Environnement\Risques\_Naturels\PPRI\_Scie\PPRI\_Scie\PlansA3